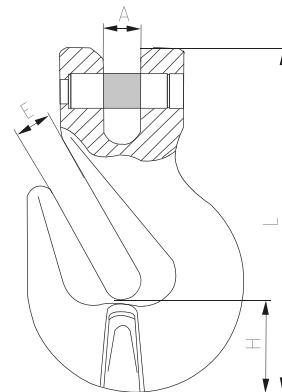


## Grade 80 chain and accessories

### 8095 - Clevis grab hook



#### Description:

- For use with Grade 80 alloy steel chain
- Used for shortening or holding required length of chain
- Size, CE, WLL, Traceability code & GRIPTON or GPT embossed

Standard:	EN 1677
Material:	Alloy steel
Factor of safety:	4 to 1
Construction:	Quenched & tempered
Proof load:	2 times of working load limit
Finish:	Powder coated

#### Clevis grab hook

Part No.	WLL/T	A (mm)	E (mm)	H (mm)	L (mm)	Weight (Kg)
8095.0007	1.5	10	9.5	23	106.5	0.30
8095.0010	3.15	12.7	13	31	137	0.65
8095.0013	5.3	16.5	16.5	43	184.5	1.70
8095.0016	8	20	20	49	215	2.50
8095.0020	12.5	24	24	58	254	4.25
8095.0022	15.5	27.5	26.5	66	295	6.30