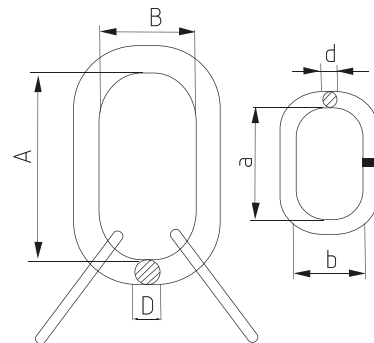


Grade 80 chain and accessories

1210 - Master link assembly



Description:

- Designed for use with steel wire rope or grade 80 alloy steel chain
- For overhead lifting application
- Size, CE, WLL, Traceability code & GRIPTON or GPT embossed

Standard: EN 1677

Material: Alloy steel

Factor of safety: 4 to 1

Construction: Quenched & tempered

Proof load: 2 times of working load limit

Finish: Powder coated

Master link assembly

| Part No. | Item No. | WLL (T) | A (mm) | B (mm) | D (mm) | a (mm) | b (mm) | d (mm) | Weight (Kg) |
|-----------|----------|---------|--------|--------|--------|--------|--------|--------|-------------|
| 1210.0020 | Q20B | 5.8 | 170 | 90 | 20 | 120 | 70 | 16 | 2.41 |
| 1210.0022 | Q22B | 7.6 | 170 | 90 | 22 | 150 | 80 | 20 | 3.77 |
| 1210.0025 | Q25B | 10 | 190 | 100 | 25 | 150 | 80 | 20 | 4.45 |
| 1210.0028 | Q28B | 12.7 | 210 | 110 | 28 | 170 | 90 | 22 | 6.12 |
| 1210.0032 | Q32B | 15.2 | 270 | 140 | 32 | 190 | 100 | 25 | 9.47 |
| 1210.0038 | Q38B | 25 | 270 | 140 | 38 | 270 | 140 | 32 | 17.4 |
| 1210.0045 | Q45B | 34 | 320 | 170 | 45 | 270 | 140 | 38 | 26.76 |
| 1210.0050 | Q50B | 40 | 380 | 200 | 50 | 270 | 140 | 38 | 33.2 |
| 1210.0060 | Q60B | 58 | 430 | 220 | 60 | 380 | 200 | 50 | 66 |
| 1210.0070 | Q70B | 84 | 500 | 250 | 70 | 430 | 220 | 60 | 103 |