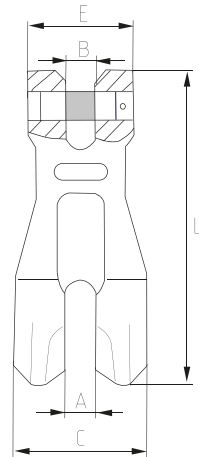


Grade 80 chain and accessories

8090 - Shortening clutch



Description:

- Designed for use with grade 80 alloy steel chain
- Used for shortening or holding required length of chain
- Size, CE, WLL, Traceability code & GRIPTON or GPT embossed

Standard: EN 1677
 Material: Alloy steel
 Factor of safety: 4 to 1
 Construction: Quenched & tempered
 Proof load: 2 times of working load limit
 Finish: Powder coated

Shortening clutch

Part No.	WLL (T)	A (mm)	B (mm)	C (mm)	E (mm)	L (mm)	Weight (Kg)
8090.0078	2	9.5	9.5	45	36	101	0.41
8090.0010	3.15	13	13	55	48	138	0.97
8090.0013	5.3	18	16	75	59	177	2.01
8090.0016	8	21	21	93	73	220	3.32
8090.0020	12.5	22	22	99	78	238	6.20
8090.0022	15	25.5	25.5	118	98	295	8.50