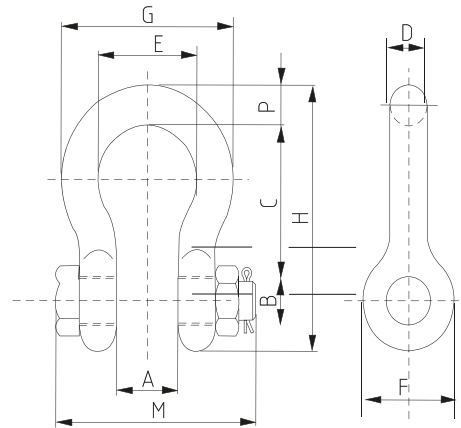


## Shackles

### 5150 - Nut & bolt bow shackle



#### Description:

- Recommended for long term and permanent applications
- Enhanced safety with nut and cotter pin
- Suitable for overhead lifting
- CE, Traceability code, Grade, Size, WLL & GRIPTON or GPT embossed

Standard:	US federal specification RR-C-271 D
Material:	Body: Forged carbon steel, Pin: Alloy steel
Factor of safety:	6 to 1
Construction:	Quenched & tempered
Proof load:	Individually proof tested to 2 times of working load limit
Finish:	Body: Hot dip galvanized, Pin: Powder coated

#### Nut & bolt bow shackle

Part No.	Size (in)	WLL (T)	A (in)	B (in)	C (in)	D (in)	F (in)	G (in)	H (in)	L (in)	M (in)	P (in)	Weight (lbs)
5150.0005	1/4"	0.5	0.51	0.31	1.14	0.27	0.79	0.69	1.30	1.90	1.67	0.27	0.11
5150.0007	5/16"	0.75	0.53	0.37	1.22	0.31	0.85	0.83	1.48	2.14	1.89	0.31	0.22
5150.0010	3/8"	1.00	0.67	0.44	1.44	0.39	1.03	0.98	1.81	2.54	2.26	0.39	0.33
5150.0015	7/16"	1.50	0.73	0.50	1.69	0.44	1.16	1.06	2.03	2.90	2.54	0.43	0.49
5150.0020	1/2"	2.00	0.81	0.62	1.88	0.50	1.31	1.22	2.32	3.31	2.93	0.50	0.79
5150.0032	5/8"	3.25	1.06	0.75	2.36	0.63	1.69	1.57	2.95	4.15	3.66	0.63	1.68
5150.0047	3/4"	4.75	1.26	0.87	2.81	0.75	2.01	1.89	3.50	4.94	4.21	0.75	2.72
5150.0065	7/8"	6.50	1.46	0.98	3.33	0.87	2.28	2.13	4.02	5.75	4.76	0.87	3.95
5150.0085	1"	8.50	1.71	1.10	3.79	1.04	2.70	2.36	4.67	6.51	5.39	0.98	5.66
5150.0095	1-1/8"	9.50	1.89	1.26	4.29	1.14	2.95	2.68	5.24	7.40	5.71	1.14	8.27
5150.0120	1-1/4"	12.00	2.09	1.38	4.74	1.26	3.31	2.99	5.83	8.19	6.57	1.26	11.71
5150.0135	1-3/8"	13.50	2.32	1.50	5.28	1.38	3.70	3.31	6.46	9.06	7.28	1.38	15.83
5150.0170	1-1/2"	17	2.44	1.65	5.85	1.50	3.90	3.62	6.89	9.98	7.80	1.50	20.8
5150.0250	1-3/4"	25	2.95	1.97	7.01	1.77	5.04	4.17	8.62	11.87	8.94	1.77	33.91
5150.0350	2"	35	3.31	2.20	7.76	2.05	5.83	4.80	9.92	13.31	9.84	2.05	52.25
5150.0550	2-1/2"	55	4.21	2.76	10.61	2.60	7.32	5.71	12.52	17.44	11.77	2.64	98.25
5150.0850	3"	85	5	3.3	13	3.12	7.88	6.5	14.62	21.5	15.55	3.62	154.0
5150.1200	3-1/2"	120	5.25	3.76	15.63	3.62	9	8	17.02	24.88	18.2	4.38	265.0
5150.1500	4"	150	5.5	4.26	14.5	4	10	9	18	25.68	19.84	4.56	338.0