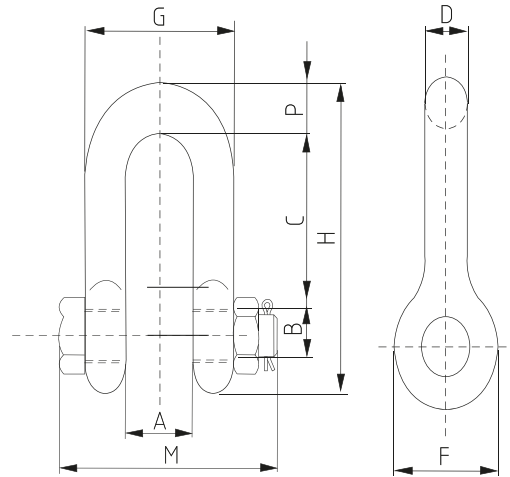


## Shackles

### 5350 - Nut & bolt D shackle



#### Description:

- Recommended for long term and permanent applications
- Enhanced safety with nut and cotter pin
- Suitable for overhead lifting
- CE, Traceability code, Grade, Size, WLL & GRIPTON or GPT embossed

Standard:	US federal specification RR-C-271 D
Material:	Body: Forged carbon steel, Pin: Alloy steel
Factor of safety:	6 to 1
Construction:	Quenched & tempered
Proof load:	Individually proof tested to 2 times of working load limit
Finish:	Body: Hot dip galvanized, Pin: Powder coated

#### Nut & bolt D shackle

Part No.	SIZE (in)	WLL (T)	A (in)	B (in)	C (in)	D (in)	F (in)	G (in)	H (in)	M (in)	P (in)	Weight (lbs)
5350.0005	1/4"	0.5	0.51	0.31	0.87	0.27	0.69	1.02	1.62	1.67	0.26	0.13
5350.0007	5/16"	0.75	0.53	0.37	1.00	0.31	0.83	1.16	1.92	1.89	0.31	0.23
5350.0010	3/8"	1.00	0.67	0.44	1.22	0.39	0.98	1.46	2.32	2.26	0.39	0.33
5350.0015	7/16"	1.50	0.73	0.50	1.43	0.43	1.06	1.59	2.65	2.54	0.43	0.49
5350.0020	1/2"	2.00	0.81	0.62	1.63	0.50	1.22	1.81	3.03	2.93	0.50	0.75
5350.0032	5/8"	3.25	1.06	0.75	2.01	0.63	1.57	2.32	3.80	3.66	0.63	1.47
5350.0047	3/4"	4.75	1.26	0.87	2.48	0.75	1.89	2.83	4.65	4.21	0.79	2.52
5350.0065	7/8"	6.50	1.46	0.98	2.83	0.87	2.13	3.23	5.28	4.76	0.89	3.85
5350.0085	1"	8.50	1.71	1.10	3.22	0.98	2.36	3.68	5.94	5.39	0.98	5.55
5350.0095	1-1/8"	9.50	1.89	1.26	3.70	1.14	2.68	4.17	6.81	5.71	1.14	7.6
5350.0120	1-1/4"	12.00	2.09	1.38	4.02	1.26	2.99	4.61	7.46	6.57	1.26	10.81
5350.0135	1-3/8"	13.50	2.32	1.50	4.47	1.38	3.31	5.08	8.25	7.28	1.38	13.75
5350.0170	1-1/2"	17	2.44	1.65	4.84	1.50	3.62	5.43	8.98	7.80	1.50	18.5
5350.0250	1-3/4"	25	2.95	1.97	5.83	1.77	4.17	6.50	10.67	8.94	1.77	31.4
5350.0350	2"	35	3.31	2.20	6.85	2.05	4.80	7.32	12.36	9.84	2.01	46.75
5350.0550	2-1/2"	55	4.21	2.76	8.09	2.64	5.71	9.49	14.96	11.77	2.64	85